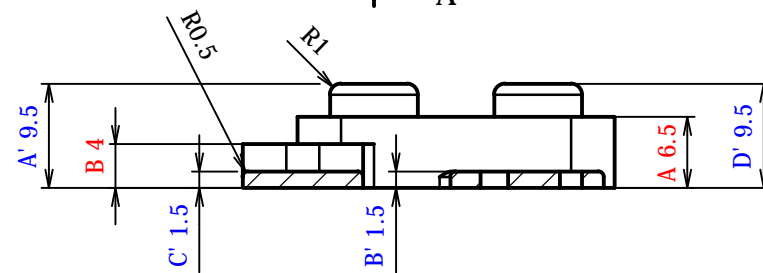
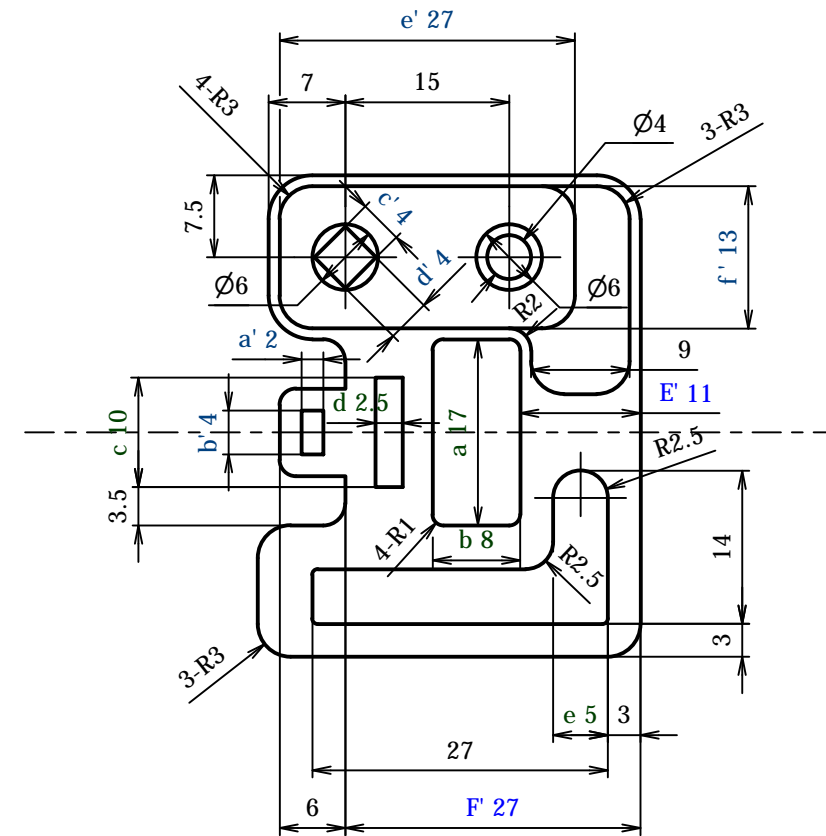
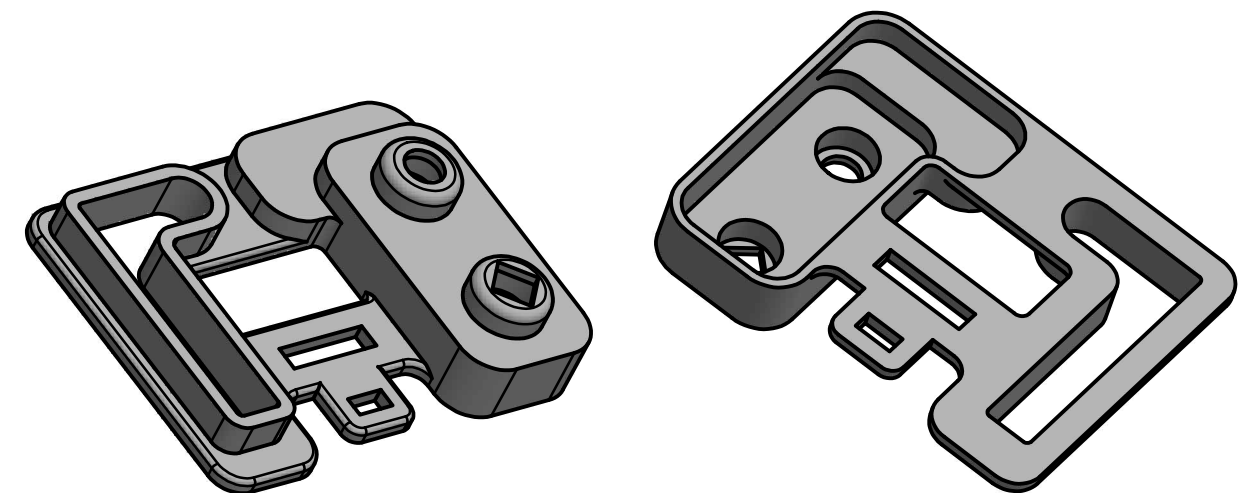


SECTION A-A



SECTION B-B





Ensure that,

- 1) The molding compound is polystyrene (shrinkage approx 0.5%)
- 2) There are no burrs on the product (molded part).
- 3) There are no cutter marks of machining on the surface of the product (molded part).
- 4) There are no scratches, dents, etc on the surface of the product (molded part).
- 5) There are no defective moldings such as flow marks, weld lines,, burns, etc.
- 6) From captial letter "A" to "J" represent product's main dimension.
- 7) From capital letter "A" " to "G" " represent product's secondary dimension.
- 8) From small letter "a" to "g" represent mould's main dimension.
- 9) From small letter "a" " to "g" " represent mould's secondary dimension .

Test Project for the 42nd WorldSkills
Competition in Leipzig, Germany 2013.
Copyright © 2011 Worldskills International.
All Rights Reserved.



| | | | |
|-----------------------------------|-------|--------|--------------------------------------------------------------------------------------------------------------------------------------------------------------------------------|
| Skill: D1:Plastic Die Engineering | | |  OR  |
| Scale: 1.5:1 | Date: | Paper: | |
| Drawn / Design by: INDIA | | | Drawing No: |
| Description: TEST PROJECT 2 | | | Rev: Page: |