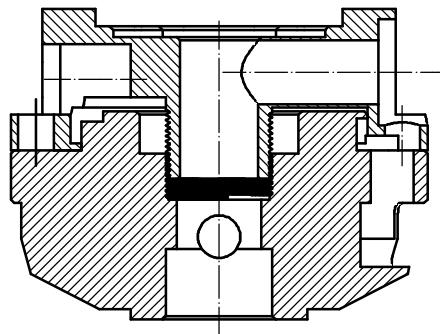
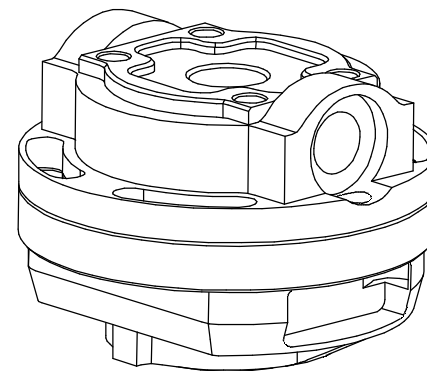
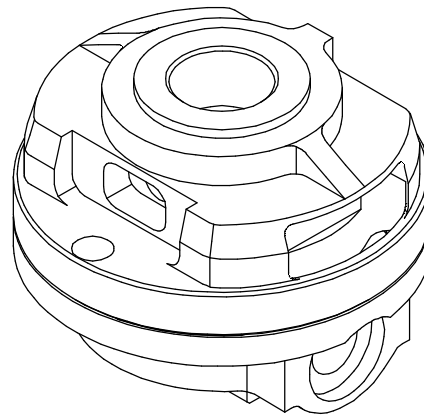
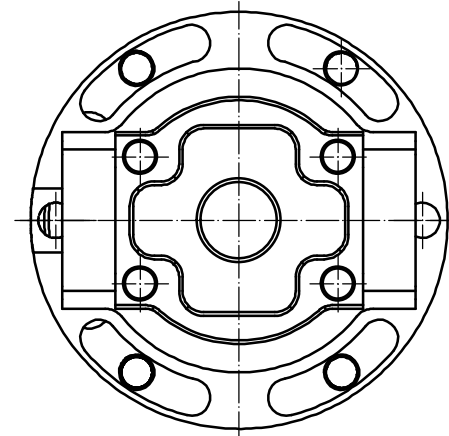
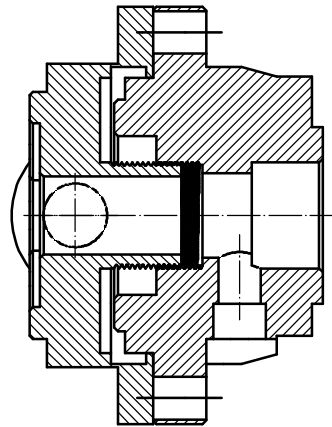


SECTION B-B

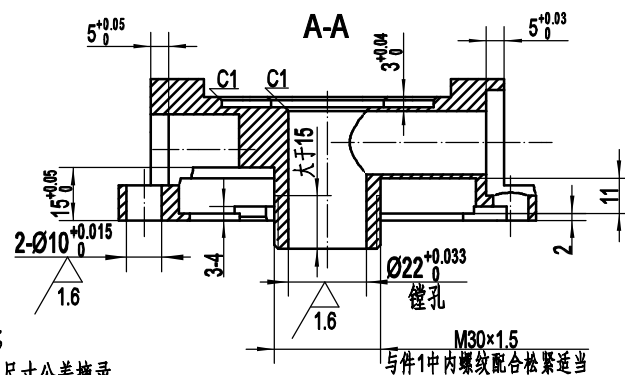
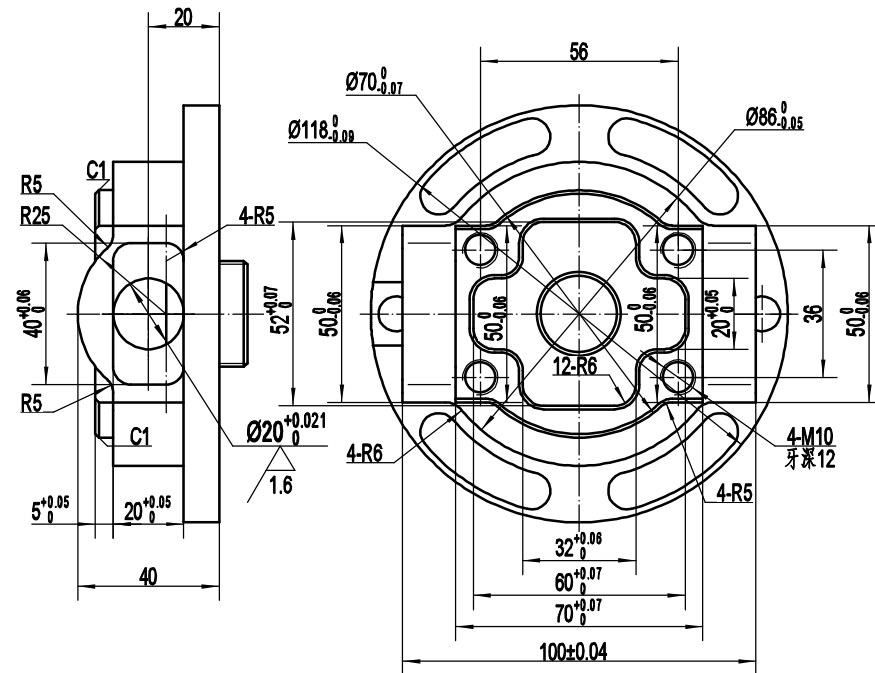
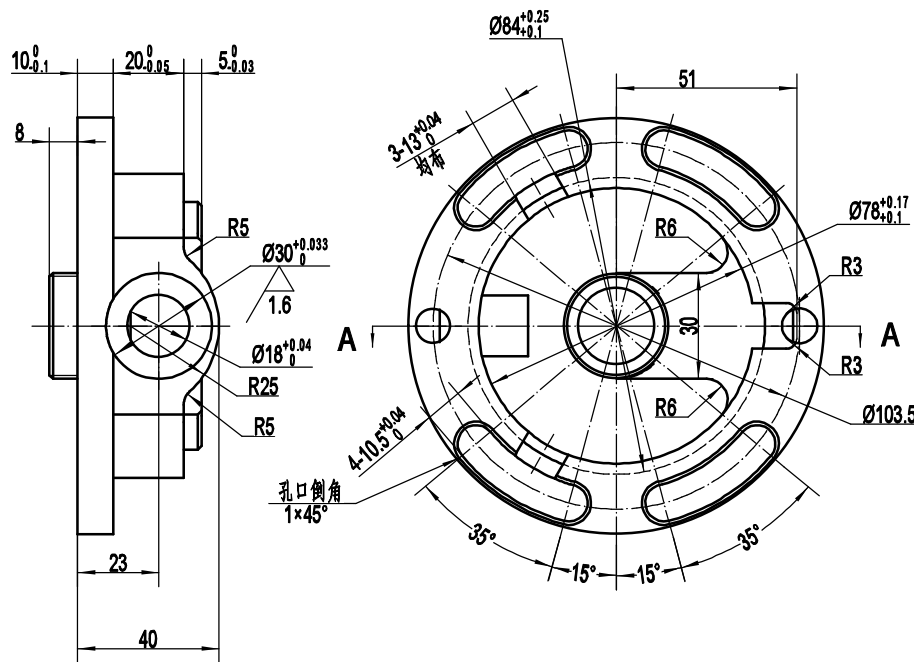


SECTION A-A



技术要求:
1、件1与件2通过三个凸起卡入装配成形
2、件1与件2内外螺纹旋入

制图			装配图4-0	1:2
校核				



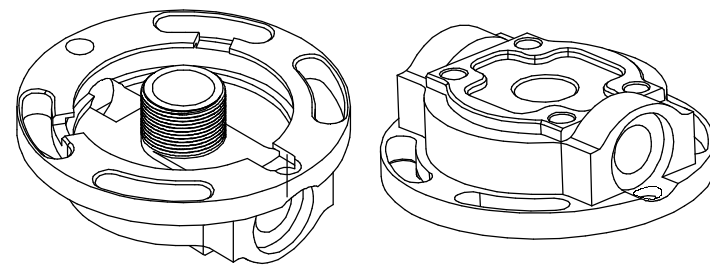
技术要求:

1. 锐角倒钝

2. 未注尺寸公差按GB/T1804-m;

GB/T1804未注尺寸公差摘录

M30×1.5
与件1中内螺纹配合松紧适当



公差等级	基本尺寸分段		
	0.5-6	6-30	30-120
中等m	±0.1	±0.2	±0.3

制图			5-2	1:2
校核				材料: 45